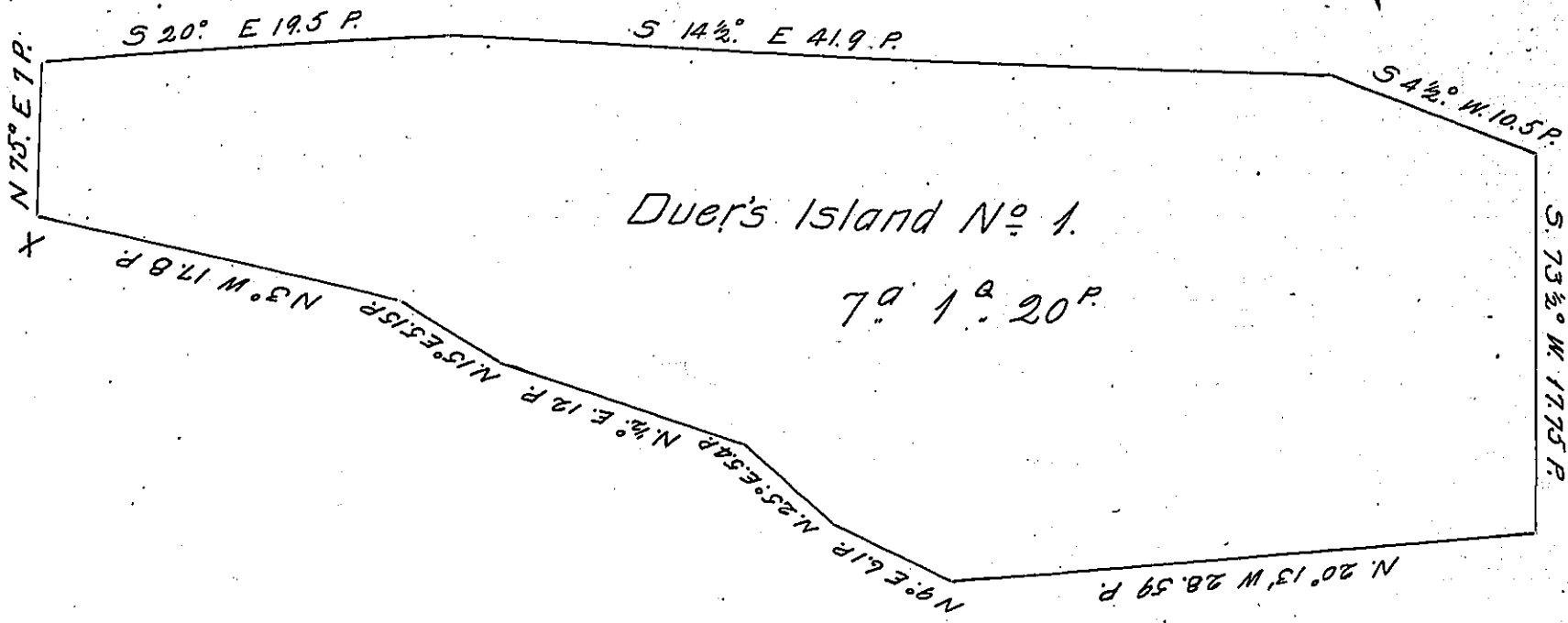


Delaware River



Duer's Island No. 1.

7<sup>0</sup> 1<sup>0</sup> 20<sup>0</sup>

Delaware River

By virtue of a Warrant dated the 2<sup>nd</sup> day of June Inst. surveyed on the 7<sup>th</sup> of June unto John Duer the above described Island situate in the River Delaware called Duer's Island No. 1 situate in Lower Marketfield Township in the County of Bucks and opposite the other Lands of the said John Duer Containing seven acres and a quarter of an acre and the usual allowance of six Per Cent.

Sam<sup>l</sup> Hart D.S.

June 8<sup>th</sup> 1809.

To Andrew Porter Esquire

Surveyor General of Pennsylv<sup>a</sup>

IN TESTIMONY that the above is a copy of the original remaining on file in the Department of Internal Affairs of Pennsylvania, made conformably to an Act of Assembly approved the 16th day of February, 1833, I have hereunto set my Hand and caused the Seal of said Department to be affixed at Harrisburg, this twenty ninth day of August 1904.

*James P. Brown*  
 Secretary of Internal Affairs.